

# snap shots

Volume 11 Number 6

February, 2006

## 'What Am I Bid?' — Annual Members' Auction Feb. 5

**You can both a buyer and a seller be at PHSNE's auction program at Waltham High**

PHSNE's annual Members' Auction is your chance to go home with a box of treasures, or to unload a box of junk. The auction, on the agenda for the February meeting, is always a good time to sell unneeded items, get a bargain, and just have a good time in general.

Many of your favorite PHSNE confreres will return in familiar roles. Auctioneers will once again include the very lovely and very talented Larry Rochette and Marti Jones. The legendary dollar table will return, with every item unconditionally guaranteed to be worth at least some fraction of its marked price.

You can submit up to six lots for the auction (and of course you can buy as many lots as you want). If you have items to auction, and particularly if they are large, advance notice is appreciated: please contact Alfred Wol-sky, auction manager, at 781-648-4198 ext. 15, so he can include them in his plans. Advance notice is not required, though: you can bring items for the auction with you to the meeting.

The complete rules for the auction are posted on the PHSNE Web site (go to <http://www.phsne.org/auctions>).



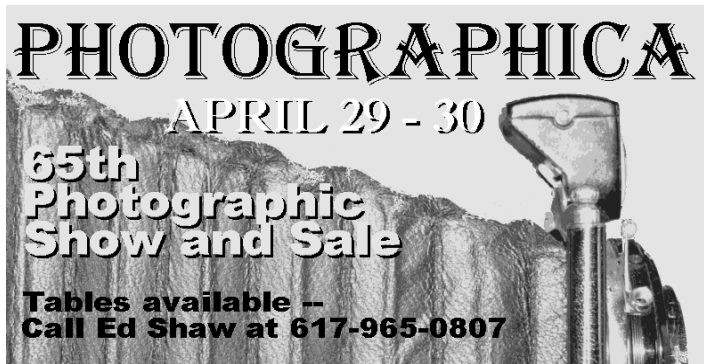
David De-Jean

*Lew Regelman, Dan Jones, and Ralph Johnson carefully handpick only the finest examples of photographic history and technology (or junk, depending on your viewpoint) from the treasures in the cavernous PHSNE warehouse.*

Some of the most important points:

- Anyone, whether a member of PHSNE or not, may register to bid at the auction.
- Anyone may consign a maximum of six items or box lots to be sold at the auction. Sellers may specify a reserve for each lot, below which amount the item or lot will not be sold. (PHSNE reserves the right not to accept lots from any prospective sellers.)
- Auction lots may be previewed before the start of the meeting. Previewing ends at the posted time for the start of the auction.
- All sales are final, and all items are sold As Is, with all faults, and neither the auctioneer, the Society, nor the seller makes any warranties or representations of any kind or nature with respect to the property, its value, or the correctness of any description of the item.
- The buyer pays a 10% buyer's premium, which will be added to the hammer price of each item. A 15% seller's premium will be deducted from the selling price. These two premiums constitute PHSNE's commission.
- All purchases must be paid for in full and removed on the day of the sale. Payment will be accepted in cash, or personal check with ID at the discretion of PHSNE. Credit cards are NOT accepted.

**PHOTOGRAPHICA**  
APRIL 29 - 30  
**65th  
Photographic  
Show and Sale**  
Tables available --  
Call Ed Shaw at 617-965-0807



## Photographic Exhibitions and Shows in the New England Area

By James Hill

The **Amistad Center for Art and Culture at the Wadsworth Atheneum Museum of Art** in Hartford, Connecticut (600 Washington Street, 860-278-2670, [www.amistadar-tandculture.org](http://www.amistadar-tandculture.org)) provides public access to the Randolph Linsly Simpson Collection. The more than 7,000 works of art, artifacts, and photographs document over three hundred years of the African-American experience.

The Center's mission is to "interpret and celebrate African-American art and humanities and to educate the public about their importance and influence in American life," and one of the main strengths of the collection is its more than two thousand late nineteenth and early twentieth century photographs, ranging from images of slave life, the Reconstruction era, through the turn of the century, to memorable photos of the Civil Rights movement, celebrities, and political figures.

The current photograph exhibit at the Center, "*Double Exposure: African-Americans Before and Behind the Camera*," features works of contemporary photographers. Related programs will examine some of the photographic processes presented in the exhibit, the history of race and racism in America, and explorations of the photography of identity and history. The exhibit runs now through June 19, 2006.

There are only a few days left to see "*Focus On The Moment: Boston Herald Photography*" through Feb. 10 at the **Adams Gallery** in the David Sargent Hall of Suffolk University Law School, 120 Tremont Street, Boston (617-305-1782, on the Webb at [www.suffolk.edu/](http://www.suffolk.edu/)



*Unidentified Bride, circa 1850, George Eastman House Collection, in "Young America: The Daguerreotypes of Southworth and Hawes" at the Addison Gallery of American Art.*

*adams\_gallery*). The exhibit features color and black-and-white images captured by Boston *Herald* photographers locally, nationally, and internationally, from Bobby Orr flying over the ice of the old Boston Garden to American soldiers on patrol in the sands of Iraq. Included in the exhibit is Stanley J. Forman's 1977 Pulitzer-Prize winning "Soiling of Old Glory", showing the American flag being used as a weapon on Boston's City Hall Plaza during a 1976 anti-busing demonstration. Forman is the only winner of consecutive Pulitzer Prizes in the Spot News category. The Adams Gallery is open every day from 9:00 am to 7:00 pm, and admission is free.

Upcoming: "*Young America: The Daguerreotypes of Southworth and Hawes*" opens Jan. 28 at the **Addi-**

**son Gallery of American Art** on the campus of Phillips Academy in Andover, Massachusetts, and runs through April 29, 2006 (180 Main Street, Andover, MA 01810, telephone 978-749-4015, [www.andover.edu/addison/home.htm](http://www.andover.edu/addison/home.htm)).

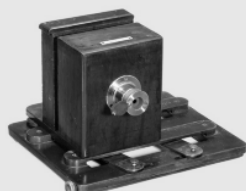
### Membership News

PHSNE's Membership Directory is one of the benefits of membership, and work on the 2006 Membership Directory has begun. To make sure you receive your copy please check to see that you have paid your 2006 dues. PHSNE membership is \$30 for an individual, \$36 for a family, and \$40 for foreign members. Send dues payments to Adrian Levesque, 4 Sugar Hill Drive, Nashua, NH 03063.

To make the directory as accurate as possible, if your address or other status information has changed, please send corrections to the address above or e-mail [ALevesque@aol.com](mailto:ALevesque@aol.com) with "PHSNE" in the subject line.

*snap shots*, edited by David DeJean, is published by the Photographic Historical Society of New England, Inc., P.O. Box 650189, West Newton, MA 02465-0189. Send news briefs to [ddejean@dejean.com](mailto:ddejean@dejean.com).

**ADVERTISEMENT**



Single Stereo Camera  
»Negretti & Zambac, 1850-59  
Exceptionally rare!



Daguerreotype Sliding Box Camera  
»Voigtlander, 1842  
Lens no. 234. – The earliest known worldwide!



Bi-unial Magic Lantern, c. 1885

French Daguerreotype Sliding Box Camera  
»Jamin, c. 1844  
Complete original outfit with mercury box, burner, box and 2 plates. – Sensational collector's item of top museum quality!



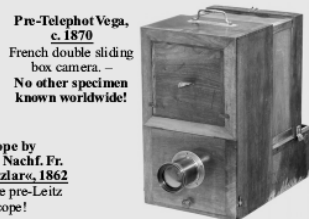
»Leica Compur«, 1929



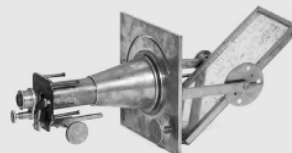
The very first »Leica«:  
Leitz-Hand-Kamera, 1907. Extremely rare!



Microscope by  
»C. Kellner's Nachf. Fr. Bethle in Wetzlar, 1862  
Extremely rare pre-Leitz microscope!



Pre-Telephot Vega,  
c. 1870  
French double sliding box camera. – No other specimen known worldwide!



Solar Microscope by  
»Charles Chevalier«, c. 1835  
Extremely rare!



»Le Troncycémato No. 2«, c. 1910



Prototype of the Early German Cast Iron  
»Art-Nouveau-Style« Mutoscope, c. 1900

**4 Sales in 2006:**  
25 March  
20 May  
30 Sept. (photokina)  
25 November

**World's No. 1**  
**Speciality-Auction**  
**»Photographica & Film«**

**More sales – more often!**

**Classic cameras pure:**

Exceptionally rare collector's items and museum pieces from the early days of photographic history, pre-cinema and scientific optical instruments (e.g. original correspondence between C. Kellner and Steinheil, extremely rare!) up to an entire subminiature camera collection!

**Closing dates for entries:**

23 Dec. '05 \* 10 March '06 \* 30 June '06 (photokina) \* 15 Sept. '06

For more information and large colour photographs of some of the upcoming "Highlights" please see our website at:  
[www.Breker.com / New Highlights](http://www.Breker.com/NewHighlights)

Fully illustrated bi-lingual (Engl./German) COLOUR catalogue: € 28.– (Realized price list on Internet and in next catalogue). – Overseas (USA, Japan, etc.): € 37.– (approx. US\$ 45.–) incl. airmail.

Annual subscription for spring and autumn sales (4 catalogues): € 95.– \* Overseas: € 130.– (approx. US\$ 156.–) incl. airmail. \* Delivery against prepayment only! (Bank draft/cash or by Credit Card with CVV and expiry date): Mastercard / Visa / AmEx

Consignments are welcome at any time!

**AUCTION TEAM KÖLN**

**Breker – The Specialists**

P.O. Box 50 1119, 50971 Koeln/Germany · Tel.: +49 / 221 / 38 70 49 · Fax: +49 / 221 / 37 48 78  
Bonner Str. 528–530, 50968 Koeln/Germany · e-mail: Auction@Breker.com · Business Hours: Tue–Fri 9 am–5 pm

**PLEASE FEEL FREE TO CONTACT OUR INTERNATIONAL REPRESENTATIVES:**

U.S.A.: Jane Herz, Fax (941) 925-0487 \* auction01122@aol.com · Argentina: Marina Paradedo, Tel. (011) 4443-0768 \* Fax (011) 4443-9075  
Japan: Murakami Taizo, Tel./Fax (06) 6845-8628 · France: Pierre J. Bickart, Tél./Fax (01) 43 33 86 71  
Australia & New Zealand: Dieter Bardenheier, NZ, Tel./Fax -/64/(09) 817-7268 · Russia: Russian Antique Inc., Tel. 095-956-9484

## Contribute to The Journal

The PHSNE *New England Journal of Photographic History*, the Society's most important publication, is seeking articles across a wide range of subjects, and in particular is looking for photographs of people and events from PHSNE's second decade.

If you can write interesting articles about cameras and lenses, processes, images (both historic and contemporary), photographers, and digital photographic technologies, please send a summary or outline to the PHSNE Publication Committee, as hard copy (with Xerox copies of illustrations) to: PHSNE Journal, PO Box 650189, West Newton, MA 02465-0189; or by e-mail (without photographs) to [TheJournal@phsne.org](mailto:TheJournal@phsne.org) with the subject heading "PHSNE Journal."

The *Journal* needs photographs that depict the second decade of PHSNE's history — 1983 to 1993 — to illustrate the next in its series of articles on the organization's history. Dig out your box of photos and become a published photographer!

Label your photographs to the best of your ability with the date, place, event, names of people, and the name of the photographer.

For further information please call Ruth Thomasian at 617-923-4563 or email her at [archives@projectsave.org](mailto:archives@projectsave.org).

### A Party Invitation

Join in helping to get *snap shots* to your fellow members! Ask any member of the board about the monthly mailing party, where you can get to know your fellow members better and help to put *snap shots* in the mail!

### PHSNE Meetings

Meetings are usually held on the first Sunday of each month at 1:30 p.m. at Waltham High School, preceded by a mini trade fair at 12:30 and a PHSNE board meeting at 11:00 a.m.

**March 5** — "Common Cameras, Uncommon Features," presented by Paul Nisula.

**April 2** — "Historical Photographs of Natick," Presented by Richard Potter.

### Directions

Waltham High School is at 617 Lexington St. in Waltham, MA. The high school is at the top of the hill, behind other school buildings.

**From I-95 (Route 128) Northbound:** Take Exit 27 and follow Totten Pond Road 1.2 miles east until it dead-ends into Lexington St. Turn left and go .5 miles north. Turn right into the school complex.

**From I-95 (Route 128) Southbound:** Take Exit 28, Trapelo Road, east 1.3 mi. to Lexington St. Turn right and go south .8 mi. to school complex.

**From Boston/Cambridge:** Take Rte. 2 west to Exit 54B, then Lexington St. south 1.7 mi. to school complex on left.

**From Lincoln and West:** Take Rte. 2 east to Exit 53, Concord Ave. Go east 1 mi., then right onto Lexington St. and 1.3 mi. south to school complex on left.

### PHSNE Online

PHSNE is online at [www.phsne.org](http://www.phsne.org). PHSNE member Ralph Johnston is the Web master.

FIRST CLASS MAIL  
Address Service  
Requested

Photographic Historical Society of New England  
Next Meeting: Sunday, February 5, 2006  
"Members' Auction"

PHSNE  
P.O. Box 650189  
West Newton, MA 02465-0189



**snap  
shots**