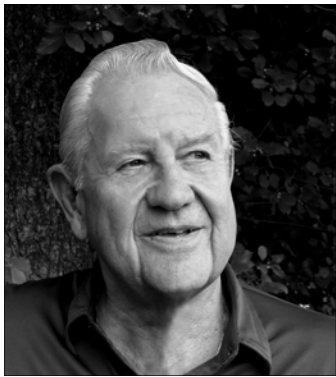


snapshots

Volume 15 Number 1

September 2009

PHSNE Presents History, Samples from Polaroid's 20 x 24 and 40 x 80 Room Camera



Peter Bass, the featured speaker at the September 13th PHSNE meeting, joined Polaroid Corporation in October, 1958 and retired in March, 1993. He helped develop the impressive 20 x 24" Polaroid camera which was manufactured in very limited numbers.

Never sold, the rare camera was loaned to well known photographers who, in turn, were required to give samples of their work with the camera to Polaroid. The photos were kept in the Polaroid archives or used for displays in Polaroid plants around the world. Peter will display many samples of photos that he and other photographers took.



Polaroid 20 x 24 inch camera

Polaroid Corporation



Peter Bass and crew photographing *The Last Supper in Milan*

Peter's interest in photography stems from the gift of a Polaroid model 95 that he received as a young boy. He was keenly interested in its operation. Ten years after completing his military ser-

vice during the Korean conflict, he joined Polaroid's Quality Control Department and later moved into the position of technical specialist.

Because of Peter's expertise, he had the distinct pleasure of working with such greats as Yosef Karsh and Ansel Adams. He traveled extensively, assisted in photographing Jimmy Carter and the King of Saudi Arabia and worked at the Vatican Museum and on countless international projects.

For the last seventeen years of his career, Peter worked at the Boston Museum of Fine Arts, photographing some of the world's most famous pieces of art with the 40 x 80 room-size camera and the 20 x 24 modified Robertson Log E. This was the setting for the Polaroid replica business.

During his thirty-five year tenure, Peter visited every Polaroid plant around the world. Peter lives in Lexington, with his wife, Rosemarie, and maintains a close relationship with a number of his former Polaroid colleagues.



Peter Bass at home in front of life-size photo of Renoir's *Dance at Bougival*, MFA



Test photo of Peter Bass taken by Josef Karsh using Polaroid camera

Polaroid Corporation

Area Photographic Exhibits:

Lalla Essaydi: *Les Femmes du Maroc*

Sep 26, 2009 – Jan 3, 2010

The extensive collection of photographs in this exhibit at the DeCordova Museum addresses the oppression of women in Islamic culture during the colonial and post-colonial periods. The title derives from Delacroix's well known painting *Les Femmes d'Algers* depicting women in a harem (1834).

Essaydi's photographs evoke orientalist paintings in which Muslim women were portrayed as sensual and mysterious sex slaves; however, she alters the perspective by removing the male voyeurs, clothing the women, and draining the color. To add to the provocative nature of her photographs, she covers surfaces with Arabic writing done with henna, despite the fact that calligraphy is considered a male domain in Islamic culture and henna is used to adorn women's bodies. DeCordova Museum and Sculpture Park, 51 Sandy Pond Rd., Lincoln, MA.

New England Photography Biennial 2009:
September 13 - November 8, 2009

The Danforth Museum of Art will host their New England Photography Biennial in the fall of 2009. The juried show provides a forum for New England photographers to exhibit their work. For further information, check the museum's web site at danforthmuseum.org/newenglandphoto2009.html. Danforth Museum of Art, 123 Union Ave., Framingham, MA.

PHSNE Membership

PHSNE membership is \$15 for students, \$35 for individuals, \$40 for a family, and \$45 for foreign membership. Please send checks in U.S. dollars drawn on a U.S. bank or dollar-denominated international money orders for dues payments.

Current members can read their renewal date from the mailing label on snap shots. For example, "Dec 2010" means your membership expires in December of 2010. Please check your label before sending in your dues.

Send payments, changes of address, and other contact information to Joe Walters Jr, PHSNE Membership Chair, P.O. Box 650189, West Newton, MA 02465 (phone: 617-694-5594; email: membership@phsne.org, or use the Web form at www.phsne.org/contacts).

snap shots, is published by the Photographic Historical Society of New England, Inc., P.O. Box 650189, West Newton, MA 02465-0189. Articles and exhibition/book reviews are always welcome.

PHSNE Warehouse Jammed: Projectors Up for Grabs

Among the many items stored in the PHSNE warehouse are lantern slide and 8 and 16 mm movie projectors—about twenty in all. They take up a lot of room, and we are running out of space on the shelves.

There is a very limited market for selling these projectors. Many are in working condition; a few may need a bulb or minor repairs. All are suitable for display.



To clear them out, we are offering them free of charge to members or to museums, schools, or other organizations. Recipients must pay for postage or arrange for pickup in the Boston area. If interested, contact snapshots@phsne.org for further information.

A Message from the President

Now that fall is here, PHSNE is back into the swing of things. We have a full program of events lined up, including Photographica 72 scheduled for October 24th—25th.

I have asked PHSNE member Bud Midgley to head up the nominations committee for the next slate of officers. Members Al Holmy and Paul Nisula will assist. If any member is interested in serving on the Board of Directors, please contact one of them or you may contact me directly. Check the new membership directory for contact information. Please consider this opportunity; we are always looking for new Board members.

Additional PHSNE news is on the web site.

- Marti Jones



Collection Features Brass and Wood Cameras

A private museum about an hour north of Miami houses a collection that specializes in wood and brass cameras manufactured in a



time span of over a hundred years. The earliest item is a small all brass Daguerreian camera from the 1840s. The newest camera, made in Hollywood, dates from the mid-1950s.

The core collection includes 125 cameras and 500 accessories from the United States, United Kingdom, Scotland, France, Germany, Spain, and Australia. Most were handmade prior to the 1880s by cabinet makers commissioned by educators, pharmacists, and doctors who understood the chemistry of this period. Knowledge of lens technology stemmed from microscopes that were in use at least 100 years before the official invention of photography.

It has been a wonderful 30 year run says the collector who obtains most of his more interesting items from other collectors throughout the world through purchases or trades. Questions about this collection can be sent to wayne@camerafinder.com.



Left to right: August Herzog, NYC, 2nd model c.1876; Photake, Chicago c.1894; salesman's sample from Australia c.1890s; Ford's Tom Thumb detective camera c.1889; Waterbury Scovill quarterplate c.1880s.

This is the first glimpse at one of many private collections. We would like to make it a regular feature in *snap shots*. If you would like to showcase your collection, please contact the editor at snapshots@phsne.org.

Photographica 72 Coming Up

The PHSNE auction team is busy preparing for Photographica 72 which will be held at the Wakefield, MA Americal Civic Center on October 24, 2009. In conjunction with the daytime sale of images and equipment, we will have an auction of about 200 items of interest on Saturday evening including large and small cameras, framed images, and photo accessories. Also for auction are unusual items such as antique wooden camera parts, wooden film holders for any size camera, colored box cameras, and starter collections for anyone just getting into this fascinating hobby.

We will auction off a very fine NOBA 5 x 7 view camera which came from the Naylor Collection and was given as a gift to PHSNE. On a NOBA stand, this camera has locking adjustments and a belt drive on the camera focus. The camera is finished in black enamel with gold plated



metal parts and a red bellows. We will also have 4 x 5 Orbit view camera along with sheet and film holders and Linhof lenses. If you are interested in e-mail bidding, contact auktion@phsne.org for a spec sheet.



- John Dockery

Farewell to Kodachrome

The May issue of *snap shots* contained an article titled "Ode to Kodachrome" outlining the history of that very popular and versatile film. Sadly, just a month later, Eastman Kodak Company announced that they were ceasing manufacture of Kodachrome since it now accounts for less than one percent of Kodak film sales. A factor in Kodachrome's demise, processing was so complicated that there is only one lab in the country still certified to deal with it.

Kodachrome was first mentioned in 1926 in a *New York Times* article citing its use in an experimental motion picture. It became available in the commercial market in 1935.

PHSNE Dues to Increase for 2010

The PHSNE Board of Directors has approved an increase in dues for 2010 for all categories except student memberships. Effective September 1st, 2009, dues will be \$15 for students, \$35 for individuals, \$40 for families, \$45 for foreign, and \$350 for life memberships. PHSNE dues have not increased for over a decade, and the increase represents a change of less than 1.5% compounded annually.

In Memoriam

Renowned architectural photographer Julius Shulman died on July 15th at the age of 98. An exhibit of his work opened shortly before his death at a gallery near his home in Laurel Canyon, Los Angeles.

After receiving recognition for a 1936 series of modernist photographs, Shulman was hired by Frank Lloyd Wright and other architectural giants. His most famous image was a 1960 photo titled Case House Study #22, a photo of the Stahl House taken in 1960. It depicts two women sitting in a glass house above the lights of Los Angeles.



Many of Shulmans tens of thousands of photos are now housed in his library of images at the Getty Center in Los Angeles.

PHSNE Meetings

Meetings are usually held on the first Sunday of each month, September to June, at 1:30 p.m. at Waltham High School, preceded by a mini trade fair at 12:30 and an open meeting of the PHSNE board at 11:00 a.m.

October 4 - Fitchburg Museum, Point and Shoot Exhibit

Directions

Waltham High School is at 617 Lexington St., Waltham, MA. The high school is at the top of the hill, behind other school buildings.

From I-95 (Route 128) Northbound: Take Exit 27 and follow Totten Pond Rd. 1.2 miles east until it dead-ends into Lexington St. Turn left and go .5 miles north. Turn right into the school complex.

From I-95 (Route 128) Southbound: Take Exit 28, Trapelo Rd., east 1.3 miles to Lexington St. Turn right and go south .8 miles to school complex on the left.

From Boston/Cambridge: Take Rte. 2 west to Exit 54B, then Lexington St. south 1.7 miles to school complex on the left.

From Lincoln and West: Take Route 2 east to Exit 53, Concord Ave. Go east 1 mile, then right onto Lexington St. and 1.3 miles south to school complex on the left.

PHSNE Online

PHSNE's Web site is online at www.phsne.org. George Champine is the Webmaster.

Join the PHSNE Forum online discussion: sign up and log in at www.phsne.org/forum, moderated by Joe Walters. For an archive of back issues of *snap shots* and meeting presentations, visit www.phsne.org/archives.

Address Service Requested
FIRST CLASS MAIL



PHSNE
P.O. Box 650189
West Newton, MA 02465-0189

Photographic Historical Society of New England
Next Meeting: Sunday, September 13
Waltham High School, 1:30 P.M.

snap
shots