

snap shots

Volume 15 Number 10

June 2010

PHSNE VISITS TWO NEW BEDFORD MUSEUMS

June 6, 2010, 10:30 A.M.



New Bedford Whaling Museum
Photo by John Wojtowicz

New Bedford has seen great growth in its arts and cultural communities in the last decade. The downtown district is now the center for restaurants, galleries, and shops, and is the site of a National

Historic Park.

In the midst of all this stands the New Bedford Whaling Museum, and this too has seen tremendous expansion in the past few years. The theater and the Lagoda Room, home to the world's largest ship model, remain, but between them the old building has been renovated to provide a sweeping entrance gallery that is now home to three whale skeletons suspended from the ceiling. A nearby room houses the skeleton of a sperm whale, making the museum the only venue in which four whale species can be viewed simultaneously.

The tools and arts of the Yankee whaler are all still on exhibit, from the harpoons and lances for the hunt to the delicately made scrimshaw implements for the family back home. Whaling was important business in its day, and the museum has many photographs of both the whaling men and their ships. Other aspects of New Bedford history, especially the fine art that was created and owned locally and the glassware produced commercially, are also on display.

The PHSNE trip to New Bedford will begin at the Whaling Museum at 10:30 A.M., Sunday, June 6. It is important to be prompt because special tours will begin immediately. Guides will lead groups of ten on tours that will last approximately two hours. When the tours conclude, there are several choices in the neighborhood for lunch ranging from full restaurants to coffee shops.

Members will meet again by 2:30 P.M. at the Fort Tabor Fort Rodman Historical Association located at the park by the mouth of New Bedford Harbor. The fort was built in the early years of the Civil War, and its story

will be found in the museum (just opposite the army tank). The museum's holdings cover American wars from the Revolution to the present day. These include uniforms worn by veterans from the local area, weapons used by U.S. forces, and many war souvenirs brought home, including cameras taken in Germany, Japanese swords from WW II, and a Chinese burp gun from the Korean War. There are also collections of artillery, ship, and airplane models as well as albums of personal photographs taken by military personnel.

The museum has grown rapidly and at present is undergoing a major expansion. It has become home for the collected stories of area veterans, young and old. A large corps of dedicated volunteers

support this popular museum. The PHSNE trip ends when the museum closes, but members can stroll the park grounds, where there are opportunities to take interesting pictures.

Those wishing to carpool must be at Waltham High School by 8:30 A.M. and either drive or contribute for gas. Cars will caravan to New Bedford. Street parking is usually available on Sundays in the immediate neighborhood, and there is also a pay garage three blocks away on Elm St. The Fort Tabor Museum is a ten minute drive from the Whaling Museum.

For additional information on the respective museums, go to whalingmuseum.org and forttaber.org. See page 4 for directions to the whaling museum, first stop on the tour. The New Bedford Whaling Museum is located at 18 Johnny Cake Hill, New Bedford, MA, 02740. Directions will be provided at the Whaling Museum for the Fort Tabor Museum.



Fort Tabor Military Museum
Photo by John Wojtowicz

~ John Wojtowicz

Current Area Exhibits:

A Passion for People: 40 Years of Nantucket Portrait Photography by Beverly Hall

If you ferry over to Nantucket this summer, check out the portraits on display at the Research Library of the Nantucket Historical Society. According to the press release, “The retrospective will open a window into the remarkable changes that have occurred on Nantucket in the last four decades, and the evolution and resilience of the individuals and families who have lived through those times. To present the full scope of Hall’s work, the exhibition will feature several hundred images on multiple presentation screens in addition to traditionally framed images. Organized by categories, the screens will allow visitors to enjoy individual topics, such as ‘Characters,’ presenting her remarkable images of Madaket Millie and Mr. Rogers, or ‘Artists,’ highlighting the gallery scene on South Wharf in the 1970’s and beyond. Hall’s work captures an important chapter in Nantucket’s postwar history, a time which it is increasingly important to record and showcase as part of Nantucket’s modern history.”

The exhibit continues until December 31 at the Whitney Gallery in the Research Library, 7 Fair St., Nantucket. For hours and map go to nemanet.org/currentexhibits.

PHSNE Membership

PHSNE membership is \$15 for students, \$35 for individuals, \$40 for a family, and \$45 for foreign membership. Please send checks in U.S. dollars drawn on a U.S. bank or dollar-denominated international money orders. An application is available at phsne.org/membership.

Members should check the expiration date on the *snap shots* mailing label before sending in dues.

Send payments, changes of address, and other contact information, to Joe Walters Jr, PHSNE Membership Chair, P.O. Box 650189, West Newton, MA 02465 (Call: 617-826-9294; email: membership@phsne.org; or use the

snap shots, edited by Beverly Regelman, is published by the Photographic Historical Society of New England, Inc., P.O. Box 650189, West Newton, MA 02465-0189. Articles and exhibition/book reviews are always welcome. Send to snapshots@phsne.org. Authors retain copyright to their original articles; however upon written application to the *snap shots* editor, PHSNE may grant non-profit societies with similar aims and interests a one-time right to reproduce a *snap shots* article as long as the author and source are credited and a complimentary copy of the publication is sent to the PHSNE mailbox.

Photographica 73 Attracts Buyers, Sellers, Browsers

Auction manager John Dockery organized another highly successful show that drew hundreds of dealers, collectors, and interested onlookers to the Americal Center in Wakefield. Dealers experienced brisk sales; some left early after selling out.

John is already busy planning for Photographica 74 which will take place on September 25th and 26th, 2010.

As always, the dollar tables were a huge hit. People were snapping up bargains as fast as new items could be put out, resulting in record-breaking dollar table sales.

Display tables held unusual collectibles, including toy and wood cameras and other items that would appeal to photo buffs. There was an



Dick Koolish, Henry Weisenburger, Bud Midgley
Big spenders at the dollar table
Photo by George Champine



Aerial view of one half of show floor



Can't resist Pat Zacks' sales pitch

Photo by Joe Walters

Photo by Dick Koolish

interesting stereo demonstration by the New England Stereo Association that ended with tips on shooting stereo with a regular camera.



Stereo New England demo
Photo by Dick Koolish

With Appreciation -

Throughout the year volunteers support PHSNE's programs, shows, auctions, publications, and other activities. In this final issue before the summer break, we thank those who have made frequent and noteworthy contributions. A complete list would be too long to print, but we appreciate all who participated in PHSNE events.

- Ruth Thomasian and Adrian Levesque put in countless hours editing and publishing *The Journal* which is being mailed as we go to press
- John Dockery ran two more successful Photographica shows; he is currently gearing up for Photographica 74 in September
- Treasurer Adrian Levesque is part of everything PHSNE does and works hard to make it look easy
- Joe Walters and Ron Polito proofread *snap shots* every month and join Lew Regelman to stamp, label, and mail the newsletter
- John Wojtowicz lines up speakers and programs for the monthly PHSNE meetings
- Webmaster George Champine keeps the *phsne.org* interesting and up-to-date
- Joe Walters did an outstanding job of upgrading the membership list and updates it regularly; he also handles members' inquiries, new memberships and renewals, and manages the online sites *phsne.org/archive*, *phsne.org/members*, and *phsne.org/forum*
- Marti Jones serves as auctioneer at PHSNE auctions
- Jim McDonough, Assistant Photographica Show Manager, insures that everything runs smoothly
- Bud Midgely puts forth considerable effort at the warehouse and at Photographica
- Lew Regelman keeps the warehouse organized, repairs donated equipment, consigns equipment for auctions, and ran 2 successful auctions this year
- Pat Zacks has become Photographica Queen of the Dollar Table
- Board members meet monthly to provide the guidance, support, and people-power for PHSNE activities. The current Board consists of John Wojtowicz (president), Lew Regelman (vice-president), Allan Goodrich (secretary), Adrian Levesque (treasurer), Marti Jones (immediate past-president), Cindy Berry, George Champine, John Dockery, Walter Friesendorf, Ron Polito, Ruth Thomasian, Joe Walters, Henry Weisenburger.

And thanks to all the members/dealers who faithfully attend every Photographica making it the great show it is. Apologies to anyone whose name was omitted. There are many unsung heroes too numerous to list; their contributions are equally valued.

WW II Cinematographer/Photographer Continues to Give History Lessons



U.S. Marine Corps Combat Correspondents Association

Growing up in Gloucester, MA, Norman Hatch liked to secretly photograph dancers at a Boston burlesque house. After joining the Marines at the onset of World War II, he used his photographic talents for different purposes.

As Staff Sergeant Hatch, he was in the midst of some of the most severe fighting in the Pacific. His 19 min-

ute film, *With the Marines at Tarawa*, documenting the three-day battle in November, 1943, won an Academy Award. Smaller than New York's Central Park, Tarawa was under Japanese control and key to the Marines' progress towards Japan. The film can be viewed on youtube.com or purchased at amazon.com and other venues.

Over 1,000 Marines and Navy men died in this battle, along with about 4500 Japanese. Hatch's film showed the American public, for the first time, bodies lying on the beach and floating in the water. Roosevelt was persuaded to let the film be shown in order to gain public support for the war.

Hatch's comment, when asked why he was on the battlefield, was that "The public had to know what we were doing, and this was the only way they would find out." More than sixty years later, he is still making sure people find out. Hatch finds opportunities to ask people what they know about Tarawa and when, as is usually the case, they reply nothing, he commences to give them "History 101."

Stressing that it is only a rumor, Hatch claimed in a phone conversation with the *snap shots* editor that he heard Winston Churchill was having difficulty convincing the allies to land on a heavily fortified beach. When Tarawa succeeded, Churchill essentially said that if American Marines could do it, allied troops could too—and the Normandy invasion was launched on D-Day.

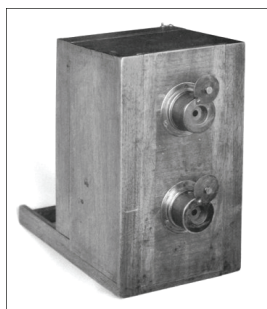
Hatch was one of nineteen cinematographers under the command of Captain Louis Hayward, photographic officer of the 2nd Marine Division. Though they were exposed to crossfire throughout the three day ordeal at Tarawa, none of the crew was killed or wounded.

Book Review: *A Village Lost and Found*

Written by Brian May and Elena Vidal and published by Frances Lincoln Limited, this work is a tour de force of technical research; it reconstructs a complete collection of the 1850s stereoscopic photographic card series *Scenes in Our Village* by T. R. Williams. The images depict daily life in the village of Hinton Waldrist in Oxfordshire, England. The book includes a stereo viewer - the OWL stereoscope, designed by May.

Each image pair is presented with the original verse from the back of the card, a commentary discussing the image as well as a full page reproduction of one half of the stereo pair, and in some cases a modern stereo pair of the same location for comparison.

All stereo images have, by necessity, a parallax difference from the left to right image; however the authors found differences in vertical parallax between different sets of cards! Apparently Williams used a camera with



From *A Village Lost and Found*

Camera with 2 vertically separated lenses

two lenses, one mounted above the other. He would expose one side of a stereo pair, then move the camera about 8 inches horizontally and expose the other side. Supporting this, May was able to acquire an example of such a camera manufactured in the correct time period.

Brian May, CBE, PhD, FRAS, is perhaps best known by the public as a founding member and lead guitarist for Queen. He completed his PhD in astrophysics in 2006. Elena Vidal specializes in the history of stereo photography. For more information, go to tinyurl.com/35fk3hh.

~Joe Walters

PHSNE Meetings

Meetings are usually held on the first Sunday of each month, September to June, at 1:30 p.m. at the Americal Center, Wakefield, MA, preceded by a mini trade fair at 12:30 and an open meeting of the PHSNE board at 11:00 a.m. However, the June meeting is a field trip to the New Bedford Museum; directions below.

**Upcoming meetings: September 12
Photographica 74: September 25, 26**

Directions to New Bedford Whaling Museum:

From the west: Take the Mass. Turnpike to Exit 11A for Rte. 495 South to Exit 7B - Rte. 24 South to New Bedford to Exit 12 - Rte. 140 South to Exit 2E - Rte. 195 East - Cape Cod to Exit 15 - Rte. 18 New Bedford Historic District to Downtown exit. Turn right on Elm Street and take second left - Bethel St., which becomes Johnny Cake Hill. Museum is on second block. From north/central: Take either Rte. 495 South or Rte. 128 South to Rte. 24 and follow directions listed above. From the south: Take Rte. 95 North to Rte. 195 East, then follow directions above. From Cape Cod: take Rte. 495 North to Rte. 25 to Rte. 195 to Exit 15 - Rte. 18, then follow directions above.

PHSNE Online

PHSNE's Web site is online at phsne.org. George Champine is the Webmaster.

Join the PHSNE Forum online discussion moderated by Joe Walters; sign up and log in at phsne.org/forum. For an archive of back issues of *snap shots* and meeting presentations, visit phsne.org/archive.

Address Service Requested
FIRST CLASS MAIL

Photographic Historical Society of New England
Next Meeting: New Bedford Whaling Museum
June 6, 2010, 10:30 A.M.
Note change of time and venue

West Newton, MA 02465-0189
P.O. Box 650189

PHSNE
phsne.org
shots
snap

