

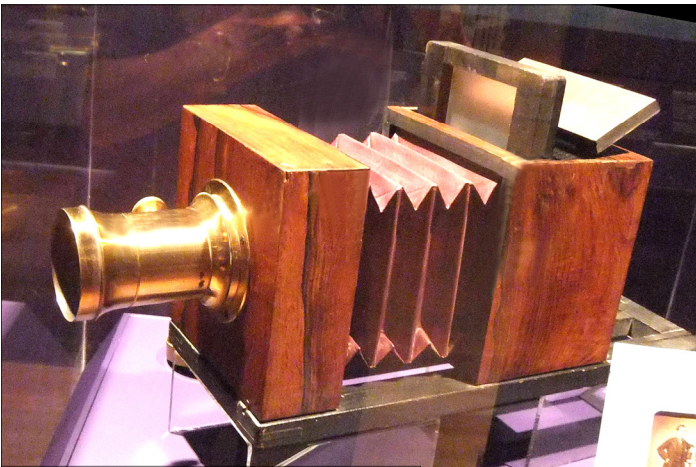
# snap shots

Volume 22 Number 4

December 2016

**Join the Festivities at PHSNE's Holiday Party, Show-and-Tell, Annual Meeting  
Sunday, December 4, 2016, 1:30 P.M.  
Woman's Club Workshop, Newton Highlands MA**

The first item on the agenda for the PHSNE meeting on December 4<sup>th</sup> is the annual meeting. With that completed, we'll move on to a lunch of pizza and beverages. The highlight of the afternoon will be a show-and-tell featuring the interesting items, photographic techniques, history, and images collected by our members. Past show-and-tell events have included unusual cameras, bulbs, and coins. The photos may give you some ideas about what to gather and bring to the meeting.



## LOST & FOUND

**Important notice to exhibitors, dealers, and attendees at April 2016 *Photographica***

We continue to look for the owner of unclaimed items left at the site of our April show. If you are missing valuable items from your inventory, please describe them and we will make sure they are returned to you.



## New England Features Three Important Exhibits

### *Imogen Cunningham: In Focus* On Display at MFA

Approximately 35 images by Imogen Cunningham are on display at the Herb Ritts Gallery, Museum of Fine Arts in Boston, through June 18, 2017. Cunningham was one of the founders of Group f/64, San Francisco Bay



*Imogen Cunningham, Hen and Chickens, before 1929. Photograph, gelatin silver. The Lane Collection.*

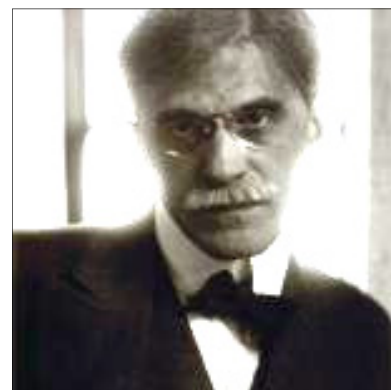
Area photographers who favored sharply focused images and natural subjects. The group included Edward Weston and Ansel Adams.

*Imogen Cunningham: In Focus* contains diverse offerings by the multi-talented photographer including portraits, street scenes, large flowers, and still lifes. See [tinyurl.com/jb2kwqd](http://tinyurl.com/jb2kwqd) for additional information.

### deCordova Offers *Edward Steichen: Twentieth-Century Photographer*

Like Cunningham, Edward Steichen tackled diverse subjects and formats: portraits, still lifes, fashion, nature, advertising, and wartime photography. Containing about 50 images, *Edward Steichen: Twentieth-Century Photographer* is on display at the deCordova Sculpture Park and Museum in Lincoln MA through March 26, 2017.

During his eclectic career Steichen served as head of the U.S. Naval Aviation Photographic Unit, photography curator at the Museum of Modern Art in New York City, and contributor to fashion magazines *Vogue* and *Vanity Fair* as well as *Camera Work*. His style also was varied: a Pictorialist at the outset, dedicated to soft focus that enabled photographs to look like paintings, later preferring the sharper, higher contrast images that characterize much modern photography.



*Edward Steichen, Alfred Steiglitz, 1915*

The exhibit also contains examples of Steichen's "trickier" - double exposures, superimpositions, and other photographic techniques. For a detailed description and review of the exhibit by *Boston Globe* staffer Mark Feeney see [tinyurl.com/h7ghlfs](http://tinyurl.com/h7ghlfs).

\*\*\*\*\*

### *Robert Frank: Sideways* at Bowdoin College in Maine



*Wales, Robert Frank*

Robert Frank was one of the transformative figures in American culture in the 1950s according to *Boston Globe* staffer Mark Feeney in his review of the Frank exhibit at Bowdoin College in Brunswick ME ([tinyurl.com/zmaoql2](http://tinyurl.com/zmaoql2)). The exhibit contains 49 photographs dating from 1948 to 1961, taken all over the world, and runs through January 29, 2017.

### PHSNE Membership

*New members are invited to join for half the rates for the first year.* Regular PHSNE membership (U.S. and Canada) is \$20 for students, \$40 for individuals and institutions, and \$45 for a family; foreign membership is \$50. Join or renew online at [phsne.org/join](http://phsne.org/join) or [phsne.org/renew](http://phsne.org/renew), or send a check in U.S. dollars, drawn on a U.S. bank or dollar denominated international money order. Members should check the expiration date on the *snap shots* mailing label before sending in dues.

Send payments, changes of address, and other contact information, to Joe Walters Jr, PHSNE Membership Chair, 47 Calvary St., Waltham MA 02453. (Call: 617-826-9294; email: [membership@phsne.org](mailto:membership@phsne.org); or use the Web form at [phsne.org/contacts](http://phsne.org/contacts)).

*snap shots*, edited by Beverly Regelman, is published monthly, September through June, by the Photographic Historical Society of New England, Inc., 47 Calvary St., Waltham MA 02453. It is available at [phsne.org/snapshots](http://phsne.org/snapshots) within a few days of mailing. Articles and exhibition/book reviews are always welcome. Send to [snapshots@phsne.org](mailto:snapshots@phsne.org). Authors retain copyright to their original articles; however upon written application to the *snap shots* editor, PHSNE may grant non-profit societies with similar aims and interests a one-time right to reproduce a *snap shots* article as long as the author and source are credited and a complimentary copy of the publication is sent to the PHSNE address above.

## Take the Challenge: Use Your Old Lenses In New and Creative Ways

French photographer Mathieu Stern says, “I love lenses . . . I mean I am obsessed with them, but I also like weird stuff, so naturally I mixed the two and wanted to experiment.” He has issued *the weird lens challenge* which is producing unusual results. Visit [patreon.com/user?u=2560582](https://www.patreon.com/user?u=2560582) for his initial announcement and invitation to subscribe to his YouTube channel and [mathieustern.com/the-weird-lens-challenge](http://mathieustern.com/the-weird-lens-challenge) to see results of the challenges to date.

He asks, “Why just focus on the ultra expensive electronic lenses when you can do incredible things with



Taken with Reverse Globular Lens with Mir-1B

just old glass,” adding that, “The glass is the key to image beauty, not the internal motors.” His focus is not on ordinary lenses but “the old, crazy ones that you can mount on a mirrorless camera.”

In the most recent challenge, Stern used a 105 year old lens. Blog author Kishore Sawh ([slrlounge.com/a-vintage-105-year-old-lens-a-sony-a7ii-weird-lens-challenge](http://slrlounge.com/a-vintage-105-year-old-lens-a-sony-a7ii-weird-lens-challenge)) identifies the lens as the Eastman Kodak Kodex/Topaz Boyer Paris f6.3 120 mm lens mounted on a Sony A7II camera. Stern maintains that photographers who value sharp, clear images will produce consistent results, but he seeks images that “evoke an emotion” which he achieves by using lenses with “character.” The century old lens produces unusual lens flares and light leaks that Sawh states are either “dreamy” or perhaps “horrible,” depending on your viewpoint.

Blogger Robert Hardy wrote about another of Stern’s experiments, *Shooting Dreamy Circular Video with a Rare Vintage 180-Degree Fisheye Lens*



180 Degree Fisheye Lens

(December 7, 2015), noting that, “The Weird Lens Challenge has come *full circle* (pun intended). This challenge had him stacking two

vintage lenses, a Canon FD50mm and Kenko 180 degree fisheye adapter, on top of each other to create a “dreamy circular fisheye effect.” Stern commented that, “the use of circular video is pretty rare for a cinematic project, but for time-lapses it gives an impressive effect.” Other Stern challenges have relied on an old Soviet lens and tilt-shift adapter and a 50 cent plastic toy camera.

A related resource is a tutorial that explains how to mount any lens on your camera. For video instruc-



tions visit [nofilmschool.com/2016/08/tutorial-mount-any-lens-your-camera-easy-trick](http://nofilmschool.com/2016/08/tutorial-mount-any-lens-your-camera-easy-trick). Other videos of interest are [youtube.com/watch?v=5uGTzwBQ4-wvideo](https://www.youtube.com/watch?v=5uGTzwBQ4-wvideo) – cheap \$5 Russian lens will blow your mind and [youtube.com/watch?v=Bv4wzjtWYg](https://www.youtube.com/watch?v=Bv4wzjtWYg) which offers a tutorial on how to make a reverse globular lens with a Mir-1B.

Stern suggests many creative ways for our members to use the old lenses in their collections. PHSNE has a significant number of Soviet lenses from the 1960s through the 1980s which we will put in the next Members’ and/or *Photographica* auctions.

### PHSNE Member Exhibits In Newburyport MA



Vincent Lemonnier Ferro invites fellow PHSNE members to an exhibit of his photographs at the Firehouse Center for the Arts, Market Square, Newburyport MA, on display through December 4<sup>th</sup>.

*Vincent Lemonnier Ferro: Time in Paris* offers a 35

year journey with a camera, dating from the 1940s, that gives the City of Light a vintage touch. Viewing hours are from 12:00 to 5:00 P.M., with extended hours on performance nights. Ferro also extends an invitation to an artist’s reception on Saturday, November 12<sup>th</sup>, 4:00 to 6:00 P.M. For more information see [firehouse.org](http://firehouse.org) or phone the box office at 978-462-7336.



## Welcome News for Film Enthusiasts

Ilford Photo announced the opening of a photo lab in California that will process film by mail. *Imaging Resource* reports that, “While the lab will print color film, it specializes in black-and-white work. This



Mail Order service was originally introduced to satisfy amateur and hobbyist photographers who found it difficult

to have their films processed and printed on real black and white silver gelatin photo paper at a local facility. With the advent of digital imaging fewer mini labs had the capability to print real black and white, preferring to print on colour paper. The ILFORD LAB service can process any make of black and white film, and prints will be made on ILFORD black and white paper.

If you send your film through to the lab, turnaround is just 2 to 3 days, and they can work with any 35mm or 120 film, be it black-and-white, C-41 color negative or E-6 transparency films. You can also get digital copies back, at sizes up to 30MP. Prices start at \$16 per roll, with extra for additional services” ([imaging-resource.com/news/2013/08/28/ilford-opens-lab-in-u.s.-will-start-processing-your-film-by-mail](http://imaging-resource.com/news/2013/08/28/ilford-opens-lab-in-u.s.-will-start-processing-your-film-by-mail)).

## PHSNE Meetings

Meetings are usually held on the first Sunday of each month, September to June, at 1:30 p.m. preceded by an open meeting of the PHSNE Board at 11:00 a.m.

### Upcoming meetings:

**January 8**—Members’ Auction

### Driving directions to Woman’s Club Workshop, 72 Columbus Ave., Newton Highlands MA:

From I-95/Rt-128 exit 20 take Rt-9 East toward Brookline/Boston. Turn left at Woodward St, right onto Lincoln St, and left onto Columbus St. WCW will be to your right. The WCW is about 1.4 miles inside 128.

Coming west on Rt-9 from Boston, turn right on Walnut St then left on to Lincoln St, then right onto Columbus St. The WCW (#72) will be to your right.

Limited time parking rules do not apply on Sundays. Park on Columbus or Lincoln. There is a public parking lot on the other side of Lincoln opposite the Church.

### Public transportation:

See [mbta.com/rider\\_tools](http://mbta.com/rider_tools)

### Connect to PHSNE Online and by email:

PHSNE’s Web site is online at [phsne.org](http://phsne.org). See [facebook.com/phsne](https://facebook.com/phsne) for items of PHSNE interest. Comments are welcome, so join the discussion of photo history. Visit [phsne.org/archive](http://phsne.org/archive) for PHSNE history and *snapshots* issues. Scheduling changes due to weather conditions or other factors will be posted on this website.

Stay connected to PHSNE via our emails: a *snap shots* e-copy, email newsletter, and *Photographa* show announcements. Sign up at [phsne.org/emails](http://phsne.org/emails).

FIRST CLASS MAIL  
Address Service  
Requested

Photographic Historical Society of New England  
Next Meeting: Sunday, December 4, 2016  
Holiday Party, Show-and-Tell, Annual Meeting  
Woman’s Club Workshop, Newton Highlands MA



Waltham MA 02453  
47 Calvary St.

PHSNE  
[phsne.org](http://phsne.org)  
**snap  
shots**