

snap shots

Volume 22 Number 8

April 2017

Join Us For *Photographica 86*, Saturday, April 8th—One Day Only



Photographica Show Manager
John Dockery

There are three target audiences for this spring's *Photographica*: "Art" photographers looking for moderately priced medium or larger format film cameras, students looking for "cheap stuff," and collectors of images as well as hardware. The theme is *A Day of Analog/Silver Print Photography*. **Come for the show, and stay for the auction that follows.**

This year we have the two main ballrooms on the second floor; last year's issues with limited space are a thing of the past. When the show ends, the first ballroom will be locked, so dealers will be able to attend the auction knowing their merchandise is secure.

Bagels, orange juice, and coffee will be available in the morning until supplies are exhausted, but free coffee will be offered throughout the day. Count on pizza and soda at lunch-time and free cake and ice cream around 2:00 P.M.

A beer-and-wine bar will open at 4:00 PM. Note: water must be purchased at the hall at \$1 per bottle.

Remember *Photographica* is now a once-a-year event. The next show will be in April, 2018 with a

date still to be determined.

Last year's attendance was about 440, and we look forward to a successful well-attended event next month. There was a great article by Rick Russack about last year's show published in *The Antiques and the Arts*. It can be accessed at antiquesandthearts.com/crowds-turn-out-for-photographica-show.

We've added a one-hour time gap between the show and auction to give dealers a chance to inspect the auction items, register, or just socialize. Once again Marti Jones, PHSNE auctioneer extraordinaire, will lead the proceedings. Accord-



Auctioneer Marti Jones



Tables of Images For Sale



And Cameras, Cameras, and More Cameras

Details At-A-Glance

Location: VFW Post #440, 295 California Street Newton, MA 617-244-0440. This is a professional banquet hall with ramp and elevator as well as free parking for at least 200 cars.

Show Start Time: 9:00 AM to the public

Dealer Set Up Time: Friday, April 7, AFTER 2:00 PM; Access time to hall 6:00 A.M. Saturday

Early Bird Admittance Time: 7:00 AM

Show End Time: 4:00 PM

Auction: 5:00 PM

ing to *Photographica* show manager John Dockery, "PHSNE has the best auction material ready that I've seen in a long while. There are over 60 lots of quality consigned items, mostly medium format systems." If you have questions about the auction, contact Lew Regelman at auction@phsne.org. Please note we have all the items we can handle for this auction and can only accept new items for future auctions.

~Photographia photos by Dick Koolish

Daniel Dragan, 1952—2016



PHSNE member Daniel D. Dragan of New Brunswick NJ passed away on September 30, 2016. He was a very active dealer at *Photographica* shows, offering one of the most varied and interesting collections of photographic

ephemera. His table was usually one of the largest tables by the entrance door.

Dragan earned a Bachelor of Fine Arts degree in film/video and photographic arts at the School of Visual Arts in New York City. He went on to a successful career as a commercial and creative photographer. His work was exhibited at galleries and museums in the United States and Europe, and he is listed in *Who's Who in American Photography*.

One of Dragan's more interesting projects was a portrait of the full membership of the New Jersey State Legislature.

In Memoriam: Dick Welch



Dick Welch, PHSNE-life member, former board member, and camera dealer at virtually every *Photographica* show since the early 1980's, died quietly in his home on Friday, February 17, 2017 at the age of 86. People familiar with *Photographica* will be able to picture Dick, seated be-

hind a large array of cameras and lenses of every description, deep in conversation with some fellow dealer or newfound friend, or nose down in some reference book. He was often the last dealer to complete his setup on Saturday morning and, for at least the last decade or so, pretty close to the last one out on Sunday.

If Dick had a specialty in terms of equipment sold or purchased, it was the self-casing wooden cameras of the late 19th and early 20th century, often called bicycle cameras. One was always on his dealer's table, with a sign that said "I buy cameras of this kind." He was eclectic in his wares, however, and in his interests.

A teacher of math and history for many years at the secondary and college level, he prized conversation above most everything else in life. He was also one of the kindest and most generous of men, always ready to make contributions to help PHSNE. When he closed his small business, Assabet Cameras, in Maynard, MA, he donated all of his considerable inventory to PHSNE, with the provision that it be used to help students with equipment needs and raise money for the work of the society.

~Whitey Morange

PHSNE Membership

New members are invited to join for half the rates for the first year. Regular PHSNE membership (U.S. and Canada) is \$20 for students, \$40 for individuals and institutions, and \$45 for a family; foreign membership is \$50. Join or renew online at phsne.org/join or phsne.org/renew, or send a check in U.S. dollars, drawn on a U.S. bank or dollar denominated international money order. Members should check the expiration date on the *snap shots* mailing label before sending in dues.

Send payments, changes of address, and other contact information, to Joe Walters Jr, PHSNE Membership Chair, 47 Calvary St., Waltham MA 02453. (Call: 617-826-9294; email: membership@phsne.org; or use the Web form at phsne.org/contacts.)

snap shots, edited by Beverly Regelman, is published monthly, September through June, by the Photographic Historical Society of New England, Inc., 47 Calvary St., Waltham MA 02453. It is available at phsne.org/snapshots within a few days of mailing. Articles and exhibition/book reviews are always welcome. Send to snapshots@phsne.org. Authors retain copyright to their original articles; however upon written application to the *snap shots* editor, PHSNE may grant non-profit societies with similar aims and interests a one-time right to reproduce a *snap shots* article as long as the author and source are credited and a complimentary copy of the publication is sent to the PHSNE address above.

Worth Noting

Many of Dick Welch's finest early 19th century wooden cameras have been auctioned off by PHSNE, and cameras and enlargers have been donated to various school systems still teaching analog photography.

Remembering Jack Judson: His Passion Was Magic Lanterns



Jack Judson and Magic Lantern,
Photo courtesy of Witte Museum

Jack Judson, PHSNE member since 1983, passed away on January 11th at the age of 89 after collecting over 100,000 magic lanterns, slides, and miscellaneous objects relating to the antique slide projectors.

Pre-dating photography, lantern slides were hand painted drawings projected by a device illuminating the painted glass slide with an oil lamp. The projected images fascinated and entertained viewers. Magic lanterns also projected advertisements and coming attractions in the early days of motion pictures, and murals enlarged to scale provided backdrops for live performances.

Judson's interest was piqued when he purchased a magic lantern at a London street fair in 1986. Finding no information at home, he undertook lengthy research trips to Europe. By 1992, he amassed an extensive collection that was initially displayed at the Witte Museum in San Antonio but eventually needed a home of its own. He opened the Magic Lantern Castle Museum, also in San Antonio, on a site that was previously a pizzeria and a bar.

"He is confident in saying that his is the only museum devoted to the subject," according to Catherine Walworth in a 2006 article in the *San Antonio Current* (tinyurl.com/hmjl54n). "He knows how to rebuild and repair the vintage apparatuses and insists that everything is in working order."

Walworth noted that the museum housed "more than 75,000 objects, ephemera, and archival texts" and added that the collection included "the only complete set of slides from the 1700s in this country. Each little pane of glass carries an image, generally a romantic scene with ships, royal processions, and folk characters."

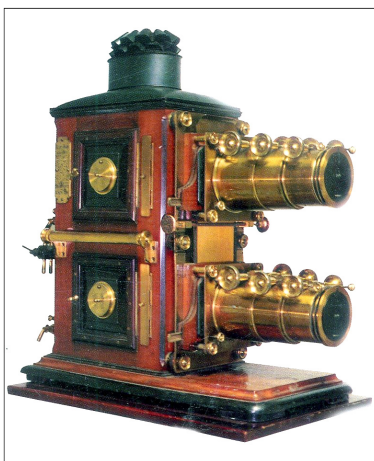
Magic lanterns were documented as early as 1641, according to Judson, in the *Ars Magna Lucis et Um-*

brae (The Great Art of Light and Shadow) published in Rome. Walworth remarked that, "it is an odd example of selective memory that 'magic lantern' has slipped so quickly out of our lexicon when it fundamentally impacted culture for almost 300 years."



The museum was privately funded and open upon request or by invitation, with tours conducted by Judson. Currently, projectors are on loan to organizations around the world, including the Smithsonian Institution and museums in the Vatican, England, and Austria. According to his son, Dan Judson, items on loan will be donated to those institutions, and much of the current collection will be donated to the Witte Museum.

Judson was a trustee of the Witte Museum, a board member of the Bexar County Historical Commission, and co-founder and long-time member of the San Antonio Historic Design and Review Commission. He launched and hosted a website for many years to connect to others world-wide who shared his passion.



Robert Sieberg, a friend of Judson's, observed in an email to PHSNE that "the best visual Jack used was the demonstration of the Calcium Light saying to the audience, 'now you can say to others you have been in the Limelight.' Jack calculated that the number of people through the Witte and the Magic Lantern Castle total a quarter million and exposed many to the history of the early projected image that would otherwise be unaware."

The January 2001 *Journal* (#159) focused on *The Magic of Magic Lanterns* and featured a 5 page article by Jack Judson under the same title. PHSNE members who have kept their old *Journals* might enjoy re-reading this fascinating article.

Research the Magic Lantern Society

Jack Judson was a past president of the Magic Lantern Society of the U.S. and Canada. Check out their website at magiclanternsociety.org.

PHSNE Needs Your Help



June 2013 field trip to Audubon Habitat, Belmont MA

Above: Whitey Morange gives pointers

Below: Joe Walters examines large format camera

Photos by Lew Regelman



We are in the process of building a library of images for use on our new website. The images we seek are of various presenters at PHSNE

meetings, members' auction activity, and field trips, especially of people taking pictures. We also need images of students using cameras or enlargers, especially view, 35mm, and twin lens reflex cameras, and

don't forget *Photographica*, especially the Dollar Table and the auction. Please send your images to Chris Hubert at website@phsne.org.

PHSNE Meetings

Meetings are usually held on the first Sunday of each month, September to June, at 1:30 p.m. preceded by an open meeting of the PHSNE Board at 11:00 a.m.

Upcoming meetings:

May 7—TBD

June 4 — TBD

Driving directions to American Legion Post:

Please visit phsne.org/shows for assistance with driving directions.

Public transportation:

The American Legion Post 440, on the Newton side of the Charles River, is about half a mile from the Watertown Square bus terminals. Both Bus #59 from Needham and Bus #71, a trackless trolley from Harvard Square, stop directly in the Square. Bus #57 from Kenmore Square and #504 an express bus from downtown Boston stop in the nearby Watertown Bus Yard, which is on the Newton side of the river. Visit mbta.com to check routes and *weekend* schedules.

Connect to PHSNE Online and by email:

PHSNE's Web site is online at phsne.org. See facebook.com/phsne for items of PHSNE interest. Comments are welcome, so join the discussion of photo history. Visit phsne.org/archive for PHSNE history and *snapshots* issues. Scheduling changes due to weather conditions or other factors will be posted on this website.

Stay connected to PHSNE via our emails: a *snap shots* e-copy, email newsletter, and *Photographa* show

Online Sites of Interest

http://fedka.com/Frames/Main_Frame.htm - Information about Russian cameras

<https://petapixel.com/2017/02/15/story-oskar-barnack-inventor-original-leica> - Story and documentary video about inventor of the Leica

<http://www.nationalgeographic.com/photography> - Award winning National Geographic photographs

<http://www.photoreview.org/wordpressindex> - Photo journal founded in 1976

<http://www.popphoto.com/someone-figured-out-process-for-developing-kodachrome-film-in-color> - An interesting experiment