



The annual PHSNE holiday party offers fun, food, and friendship. Mingle with your fellow members and find out what's going on in the world of collecting and photography in general. Hear stories about someone's latest find or big sale.

Parking is not a problem; there are many spots on the street or nearby. Directions are on page 4.



## Annual PHSNE Holiday Party and Members' Auction Sunday, December 3, 2017, 1:30 P.M. Woman's Club Workshop, 72 Columbus St., Newton MA



*Above: Goerz Tenax, 1915-1920  
Double Extension Bellows*

Pictured on this page are two of the many cameras that will be offered at the Members' Auction. PHSNE will have about forty historic photo items, and members are invited to bring up to six of their own. In the past, we've usually ended with about one hundred items in all.

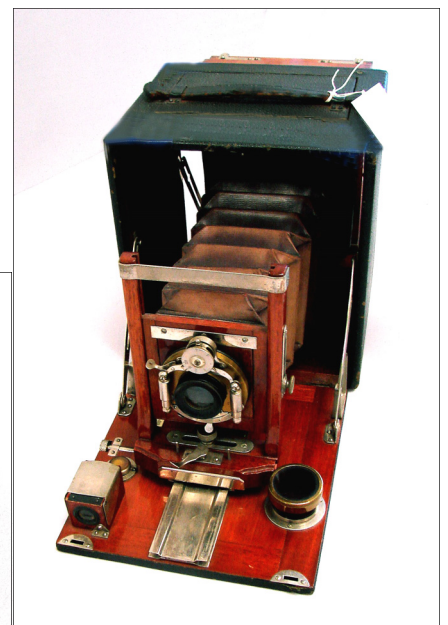
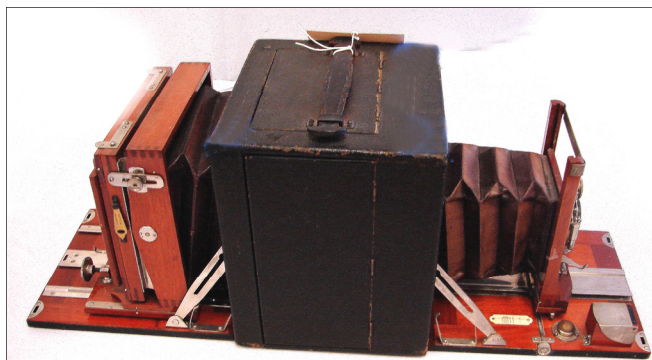
The Goerz Tenax Folding Plate Camera is a strut-type folding camera that uses 4.5 x 6 in. plates. The bellows of the Manhattan Long Focus Wizard is so long that the camera attaches to it uniquely to prevent sagging into the picture area. There is a crack in the glass back, but it is usable.

There is generally no interest in darkroom equipment unless it is very old and rare. We are not permitted to sell chemicals. Images, figurines, and accessory items, such as tripods, lenses, and camera cases are welcome and may sell. You may set a minimum price, but from past experience, many items with a reserve price go home with the seller.

Auctioneer Marti Jones will maintain a lively pace and add her usual good humor.

*Below and right: Manhattan Long Focus Wizard  
circa 1900*

A full list of PHSNE auction items will be posted on the website about a week before the event. As soon as members' items are logged in, they will be available for viewing, starting about an hour before the auction.



## PHSNE Supports New England Schools

The PHSNE School Outreach Program was initiated in 2015 by then president Richard (Whitey) Morange. Under his guidance over thirty-six 35mm SLR cameras were donated to programs and students in at least five school districts including Belmont, Waltham, Cape Cod, and Rhode Island.

In 2016 Holly Worthington volunteered to become the program's official director. During the fiscal year, ending on May 31, 2017, Holly has coordinated the placement of over sixty-three 35mm cameras, 3 TLR cameras, 2 light meters, 11 enlargers, a large variety of darkroom accessories, 30 rolls of slide film, 10 boxes of paper and large format film, and 10 boxes of photography magazines. A total of 16 programs benefited from her efforts: 7 Colleges, 7 High Schools, 1 summer camp, and one other institution.

If you know of a school that would benefit from similar donations, or if you have equipment to donate to a school, email Holly at [educameras@phsne.org](mailto:educameras@phsne.org).



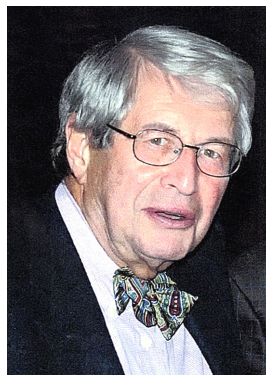
## PHSNE Membership

*New members are invited to join for half the rates for the first year.* Regular PHSNE membership (U.S. and Canada) is \$20 for students, \$40 for individuals and institutions, and \$45 for a family; foreign membership is \$50. Join or renew online at [www.phsne.org/join](http://www.phsne.org/join) or [www.phsne.org/renew](http://www.phsne.org/renew), or send a check in U.S. dollars, drawn on a U.S. bank or dollar denominated international money order. Check the expiration date on the *snap shots* mailing label before sending in dues.

Send payments, changes of address, and other contact information to Joe Walters Jr, PHSNE Membership Chair, 47 Calvary St., Waltham MA 02453. (Call: 617-826-9294; email: [membership@phsne.org](mailto:membership@phsne.org); or you can use the Web form at [www.phsne.org](http://www.phsne.org).

*snap shots*, edited by Beverly Regelman, is published monthly, September through June, by the Photographic Historical Society of New England, Inc., 47 Calvary St., Waltham MA 02453. It is available at [www.phsne.org/snapshots](http://www.phsne.org/snapshots) within a few days of mailing. Articles and exhibition/book reviews are always welcome. Send to [snapshots@phsne.org](mailto:snapshots@phsne.org). Authors retain copyright to their original articles; however upon written application to the *snap shots* editor, PHSNE may grant non-profit societies with similar aims and interests a one-time right to reproduce a *snap shots* article as long as the author and source are credited and a complimentary copy of the publication is sent to the PHSNE address above.

## In Memoriam: Dr. Daniel Tassel



Dr. Daniel Tassel, a PHSNE member since 1986, passed away on October 23, 2017. The medical internist was a photographer and collector of 19th century photography.

Israel was a special area of focus, and in 1984 Tassel produced *The Holy Land Then and Now*, a book that compared 19th century photographs with his

own contemporary images of the same views.

The inspiration for Tassel's Damascus Gate project came from the Harvard Semitic Museum which held an exhibit of early 19th century photographs of Israel during the 1980s. "In the early 1980s, Daniel Tassel volunteered at Harvard's Semitic Museum on days off from his full-time work as a practicing physician in Burlington, Mass. His introduction to its Maison Bonfils photograph collection - Bonfils ran a famous and prolific studio in Beirut that produced many images of the Middle East in the 19th century — set Dr. Tassel on a journey of personal collecting that spanned 25 years and led to his acquiring an extensive collection of thousands of historical photographs, primarily of the Middle East" ([http://hcl.harvard.edu/news/articles/2008/tassel\\_collection.cfm](http://hcl.harvard.edu/news/articles/2008/tassel_collection.cfm)).

Tassel had lived on a kibbutz and worked at an Israeli hospital in 1974, and the director of the Harvard Semitic Museum suggested a "then-and-now" project which he undertook in the early 1980s. He not only looked for the same sites, but also tried to duplicate the sun's angle to get similar lighting.

Sometimes it was difficult to gain entry to sites, but he would present a Polaroid copy of the 19th century image and then be welcomed to photograph the same view. His work was exhibited at the Semitic Museum and Symphony Hall in Boston, then at the Haifa Museum and Jerusalem Theater.

Tassel made significant contributions to Harvard and Brandeis. He donated thousands of photos to Harvard's Fine Arts Library and Fogg Art Museum. A gift to Brandeis included some of the before-after images as well as stereo cards of the Middle East and rare prints and books.

Dr. Tassel was the first internist in Burlington MA and continued his medical practice until 1998.

## Argus C3 and C33: the Bricks

Argus, based in Ann Arbor Michigan, was an American camera manufacturer founded in 1936. From 1939 to 1966 it produced and sold about two million Bakelite C3 35mm cameras. The C3 was nicknamed “the brick” because of its shape, size, and weight. It was identical to the C2 in all respects but one: it added built-in flash synchronization. The original price was \$35, expensive at about \$600 in current dollars. It earned a reputation as a reliable camera that produced images of high quality. The



Argus C3—original model

camera competed successfully against other American cameras, including the Kodak 35 Rangefinder, but it lost viability when Japanese single lens reflex cameras came on the scene.

C3 cameras were widely used during World War II. President Carter’s is displayed at the Jimmy Carter Library and Museum in Atlanta. C3s appeared in many films including *The Philadelphia Story*



Argus C3 Match-Matic

(1940) and *Harry Potter and the Chamber of Secrets* (2002). Used C3 models are readily available and fairly inexpensive; many are still in service.

As for the Argus C33 (1956-1961), Stephen Grady referred to it as a “C3 with attitude and ‘Pro’ features” (<https://www.cameraquest.com/argc33.htm>), January 2016). The pro features were “Lever Film Advance, Lever Film Rewind, four interchangeable bayonet lenses, auxiliary viewfinder, and a coupled exposure meter.”

While Grady considers the C33 the best of the bricks, he notes that the added features did not lead to significant sales because of the saturation of the C3 market and satisfaction with that model. Special features of the C33 included standardized Series VI filters for all lenses, tripod mount and shutter cable release, an exposure meter tied to shutter speeds, and easy back-door film loading.



Argus C33 outfit

Ardent Argus collectors formed an online group in 1997 that is still active; its latest website update was in September, 2017 (<https://www.arguscg.org/>). According to the website, “All types of Argus cameras and accessories, as well as other related photographic products are freely discussed. Today the ACG is the largest Internet group dedicated to the collection and restoration of Argus cameras as well as the study of the Argus company's history.” You can go to the website and join the forum.

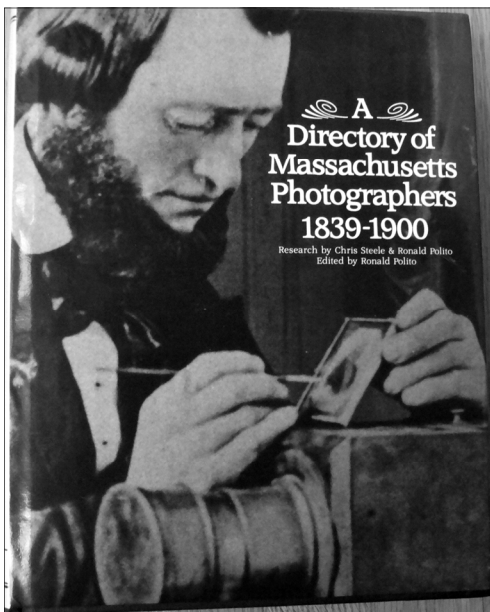
### PHSNE Invites You to Get Involved!

PHSNE relies on volunteers to keep the society running smoothly. Consider ways to get involved, including serving on standing committees, helping with events, and serving on the Board of Directors. To volunteer, email [info@phsne.org](mailto:info@phsne.org).

## Special Offer to PHSNE Members

Published in 1993, *A Directory of Massachusetts Photographers 1839—1900* is a meticulously researched, comprehensive listing of Massachusetts photographers and workers in allied fields.

The 605 page tome also includes one hundred rare images from 19th century Massachusetts. Chris Steele and PHSNE life member Ron Polito conducted the research for the book which was edited by Polito.



A handful of used copies are available online at Abe's Books and Amazon for \$69 and up to \$700 respectively. PHSNE has the last remaining new copies that will be for sale at *Photographica* in April, but some are now

available to PHSNE members at the special price of \$20 plus \$5 shipping charges. Anyone interested in purchasing a copy can email [auction@phsne.org](mailto:auction@phsne.org).

### PHSNE Meetings

Meetings are usually held on the first Sunday of each month, September to June, at 1:30 p.m. preceded by an open meeting of the PHSNE Board at 11:00 a.m.

#### Upcoming meetings:

**January 7** - Sam Hiser, CEO of New55 Holdings

#### Driving directions to Woman's Club Workshop, 72 Columbus Ave., Newton Highlands MA:

From I-95/Rt-128 exit 20 take Rt-9 East toward Brookline/Boston. Turn left at Woodward St, right onto Lincoln St, and left onto Columbus St. WCW will be to your right. The WCW is about 1.4 miles inside 128.

Coming west on Rt-9 from Boston, turn right on Walnut St then left on to Lincoln St, then right onto Columbus St. The WCW (#72) will be to your right.

Limited time parking rules do not apply on Sundays. Park on Columbus or Lincoln. There is a public parking lot on the other side of Lincoln opposite the Church.

#### Public transportation:

See <https://mbta.com/>

#### Connect to PHSNE Online and by email:

PHSNE's Web site is online at <http://phsne.org>. See <https://www.facebook.com/PHSNE/> for items of PHSNE interest. Comments are welcome, so join the discussion of photo history. Visit <http://phsne.org/archive> for PHSNE history and *snapshots* issues. Scheduling changes due to weather conditions or other factors will be posted on this website.

Stay connected to PHSNE via our emails: a *snap shots* e-copy, and *Photographa* show announcements. Sign up at <http://phsne.org/emails>.

## Useful Online Sites

<http://projectsave.org/vexhibit/vex2/index.htm> Online photo exhibit of Armenian life, 1860s through 1950s, offered by Project Save, founded by PHSNE Honorary Life Member Ruth Thomasian

<http://photoseed.com/> PhotoSeed, representing an evolving online record of this early fine-art photography movement, is a private archive with simple goals: beauty, truth, scholarship and enjoyment for all who visit.

<http://allphotolenses.com/> All About Photographic Lenses, Modern and Old. Specifications, comparisons, user reviews, features, comments, tests, MTF-charts for lenses by Canon, Nikon, Sony, Pentax, Olympus, Sigma, Tamron, Carl Zeiss, etc.