

# snap

Volume 24 Number 4



# shots

December 2018

'Tis the season—for the annual PHSNE holiday party. Join us for an interesting afternoon of food and friendly conversation with fellow photohistory enthusiasts. Annual Meeting and Auction to follow.

The list of PHSNE items to be auctioned will appear on the website in late November. Members can bring up to six items starting at 11:00; they will be available for viewing as soon as they are logged in.

**Celebrate the Season with PHSNE  
Holiday Party, Members' Auction, and Annual Meeting  
Lunch at 12:00 P.M.; Auction at 1:00 P.M.  
Sunday, December 2, 2018.  
Woman's Club Workshop  
72 Columbus St., Newton Highlands MA**

Marti Jones, PHSNE's auctioneer extraordinaire, will add her energy and wit to the main event.



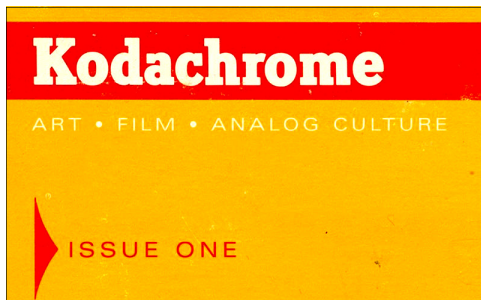
**Cameras and lenses  
pictured here will be  
on sale at the  
Members' Auction**



## Kodachrome, the Magazine

First, it was a film; then it was a song. Currently, *Kodachrome* is the title of a magazine first launched in December, 2016 celebrating analog culture. Issues can be purchased at <https://www.kodak.com/US/en/kodachrome/default.htm>.

The magazine would appear to be oriented to the past. To understand the rationale behind it, consider the events at the Consumer Electronics Show in Las Vegas earlier in the year. With all the high-tech futuristic gadgets introduced, Kodak's newly reintroduced Super 8 camera drew considerable attention. "It



was a piece of tech invented more than five decades ago. A mini movie camera with a fixed lens, a handheld grip and a genuinely retro aesthetic. And it was loaded with film, not flashcards." ([https://www.kodak.com/corp/Blog/Blog\\_Post/?contentId=4295000320](https://www.kodak.com/corp/Blog/Blog_Post/?contentId=4295000320)). The camera was introduced to PHSNE readers in the March 2016 *snap shots*.

was a piece of tech invented more than five decades ago. A mini movie camera with a fixed lens, a handheld grip and a genuinely retro aesthetic. And it was loaded with film, not flashcards." ([https://www.kodak.com/corp/Blog/Blog\\_Post/?contentId=4295000320](https://www.kodak.com/corp/Blog/Blog_Post/?contentId=4295000320)). The camera was introduced to PHSNE readers in the March 2016 *snap shots*.

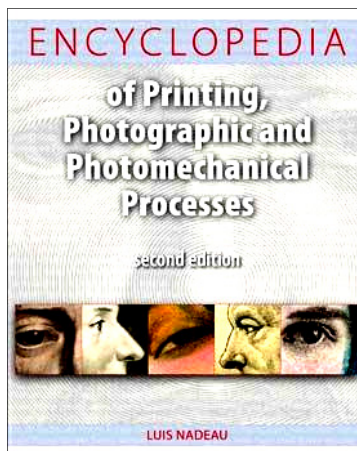
## PHSNE Membership

*New members are invited to join for half the rates for the first year.* Regular PHSNE membership (U.S. and Canada) is \$20 for students, \$40 for individuals and institutions, and \$45 for a family; foreign membership is \$50. Join at [phsne.org/join/](https://www.phsne.org/join/), renew at [phsne.org/renew/](https://www.phsne.org/renew/) or send a check in U.S. dollars, drawn on a U.S. bank or dollar denominated international money order. Members should check the expiration date on the *snap shots* mailing label before sending in dues.

Send payments, changes of address, and other contact information, to Joe Walters Jr, PHSNE Membership Chair, 47 Calvary St., Waltham MA 02453. (Call: 617-826-9294; email: [membership-chair@phsne.org](mailto:membership-chair@phsne.org); or use the Web form at [phsne.org/application](https://www.phsne.org/application)).

*snap shots*, edited by Beverly Regelman, is published monthly, September through June, by the Photographic Historical Society of New England, Inc., 47 Calvary St., Waltham MA 02453. It is available at <http://www.phsne.org/member-services/archives/> within a few days of mailing. Articles and exhibition/book reviews are always welcome. Send to [snapshots@phsne.org](mailto:snapshots@phsne.org). Authors retain copyright to their original articles; however upon written application to the *snap shots* editor, PHSNE may grant non-profit societies with similar aims and interests a one-time right to reproduce a *snap shots* article as long as the author and source are credited and a complimentary copy of the publication is sent to PHSNE.

## New Releases for Collectors' Bookshelves



Two recently published books may be of interest to collectors.

The second edition of *The Encyclopedia of Printing, Photographic and Photomechanical Processes*, edited by Luis Nadeau, is "the culmination of over 30 years of research on these subjects. It seeks to clarify the confusion which has resulted from the invention of several hundred such processes. Name any one of them, then ask the following questions: WHAT is it? WHO invented it? WHEN? WHERE do you go to find full technical details about it? This encyclopedia, with nearly 2,000 entries and 6,000 references in six languages, provides the answers" (<http://www.photoconservation.com/>).

In the 1970s, Nadeau took a course in conservation and restoration of photographic materials at the George Eastman House in Rochester. He traveled the world, learning more about the field wherever he could, and eventually developed the Fresson Process that is described and illustrated on the PhotoConversation website.

Another recent release, *Photography and the Doctor: John Adamson of St. Andrews*, details the career of the "Scottish physician, pioneer photographer, physicism, lecturer and museum curator" (1809-1870) who was

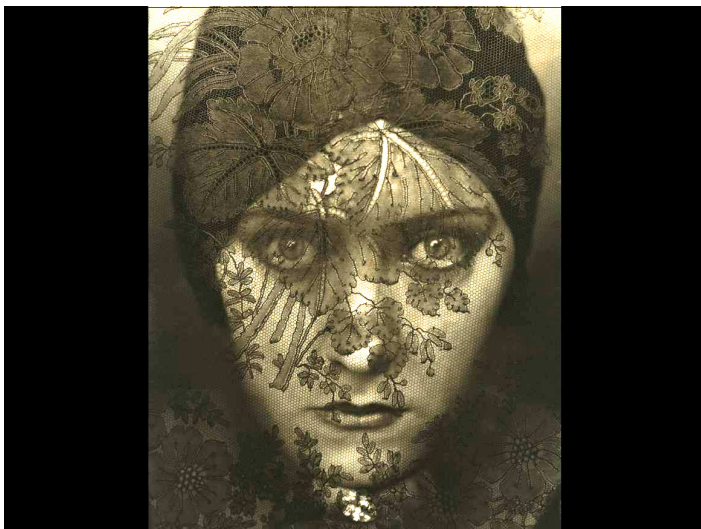


Adamson, circa 1865

"responsible for producing the first calotype portrait in Scotland in 1841 ([https://en.wikipedia.org/wiki/John\\_Adamson\\_\(physician\)](https://en.wikipedia.org/wiki/John_Adamson_(physician))). "He taught the process to his brother, the famous pioneering photographer Robert Adamson."

## Howard Greenberg Photo Collection Acquired by MFA Boston

In September, the Museum of Fine Arts, (MFA) Boston announced the acquisition of 447 photographs by 191 artists. Thanks to a major gift by the Phillip Leonian and Edith Rosenbaum Leonian Charitable Trust, the Howard Greenberg collection of photographs will enhance the museum's photography collection.



Edward Steichen, *Gloria Swanson*, 1924

According to the museum's press release, the collection includes "rare prints of modernist masterpieces and mid-20th-century classics. Social history and the human experience form an important thread of the collection, presented through documentary photography and photojournalism. Major works from between the wars in Europe, among others, also trace the evolution of photography as an art form" (<https://www.mfa.org/news/howard-greenberg-collection>).

Many of the prints are either the earliest, first, only, or best examples of the images. More than 80 photographers not previously represented at the MFA will be added to its collection.

Anne Havinga, Chair of the Department of Photography, said, "This will make the MFA a top collection for photography, befitting our standing as the major encyclopedic museum for greater New England."

"An exhibition of works from the Howard Greenberg Collection will open at the MFA on August 11, 2019 and remain on view through December 16, 2019. The display will feature highlights of the acquisition: classic black-and-white images demonstrating the breadth of photographs assembled by Greenberg."

## Do you Know Anything About This Camera?

The beauty pictured below was picked up at an auction some time ago. It's a Ruberg, made in Germany, with a body of marbled red enamel on metal. It has proven difficult to date; the exact model is not shown in McKeown's, and similar models were made from the 1930s through the 1950s.

A search in McKeown's and online yielded little information. The Internet provided background about the Ruberg Futuro, a camera that appears to be almost identical except for the designation Futuro printed on the camera. The information printed on the cameras is in German for the Futuro and in English on the Ruberg. The ring around the lens opening on the camera shown contains the following text: "Made in Germany. Patented in all countries." It's possible that the only difference is that the Ruberg was made strictly for export.

The color of the camera is a brilliant red "marbled" with black. The print version of *snap shots* will show it in black-and-white, but you can go to the online version at the PHSNE website to view it in color. A small camera that fits nicely in the palm, the Ruberg is about 4.5 inches wide and 2.5 inches high. It takes 4x6cm negatives on 127 roll film.

Its history is as much a mystery as its value, but the



owner enjoys having this attractive camera in his collection.

**Any information readers can provide about the Ruberg camera will be greatly appreciated. Send an email to [snapshots@phsne.org](mailto:snapshots@phsne.org).**

## PHSNE Supports School Program

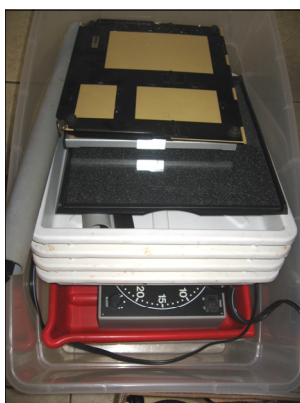


Enlarger kit

President Joel Moses and PHSNE are supporting a photography program in the Arts Department of the Hyde School in Bath, Maine. Aware of his interest in photography, Alexandra Wollans, the new Director of Arts at the school, reached out to Moses (an alumni) asking for assistance. Moses is donating a variety of supplies and equipment from his personal collection, and

PHSNE is contributing items as part of its support of educational programs in analog photography.

Included in the lots are two medium format enlargers, safe lights, timers, printing easels, film developing tanks and trays, graduates for measuring chemicals, a variety of dry and wet chemicals and printing papers, several 35 and medium format cameras, books on photography, several matted & framed photos from Moses's personal collection, and a variety of other darkroom accessories. The objective is to set up 2 enlarging stations in existing space at the school.



Small easel, trays, timer

### PHSNE Meetings

Meetings are usually held on the first Sunday of each month, September to June, at 1:30 p.m. preceded by an open meeting of the PHSNE Board at 11:00 a.m.

#### Upcoming meetings:

**January 6**—Lance Keimig, Night Photography

#### Driving directions to Woman's Club Workshop, 72 Columbus St., Newton Highlands MA:

From I-95/Rt-128 exit 20 take Rt-9 East toward Brookline/Boston. Turn left at Woodward St, right onto Lincoln St, and left onto Columbus St. WCW will be to your right. The WCW is about 1.4 miles inside 128.

Coming west on Rt-9 from Boston, turn right on Walnut St then left on to Lincoln St, then right onto Columbus St. The WCW (#72) will be to your right.

Limited time parking rules do not apply on Sundays. Park on Columbus or Lincoln. There is a public parking lot on the other side of Lincoln opposite the Church.

#### Public transportation:

See <https://mbta.com/>

#### Connect to PHSNE Online and by email:

PHSNE's Web site is online at <http://phsne.org>. See <https://www.facebook.com/PHSNE/> for items of PHSNE interest. Comments are welcome, so join the discussion of photo history. Visit <http://phsne.org/member-services/archives/> for *snapshots* issues. (member login required) and <http://phsne.org/history> for PHSNE history. Scheduling changes due to weather conditions or other factors will be posted on this website.

Stay connected to PHSNE via our emails: a *snap shots* e-copy, and *Photographa* show announcements. Sign up at <http://phsne.org/emails>.

## Websites of Interest

<https://haverhill.pastperfectonline.com/> - The Senter Digital Archive, at Haverhill Public Library contains digital images of film and glass negatives, slides, lantern slides, postcards and photographic prints. Images range in date from the 1850s to the late 20th century; they include studio portraits, press photographs, and work by local photographers. PHSNE member Dana Gee is Project Cataloger, Special Collections.

<https://www.belmonthill.org/page/arts/visual-arts/welcome-to-the-landau-gallery/> - Landau Gallery Exhibit of photography by PHSNE member and outreach volunteer Holly Worthington. Portraits and landscapes of Nova Scotia and Atlantic Canada I tintypes, lumen prints, silver gelatin prints, and inkjet images. Robsham Art Building, November 8—December 12, 2018.