



## Holiday Show-and-Tell, Annual Meeting and Election Sunday, December 7<sup>th</sup>, 7:30 P.M. EST

There's still time to sign up for a spot in the holiday show-and-tell. Go to <http://bit.ly/46UMGED> or use the QR code to get to the link.



PHSNE Program Coordinator Dana Gee writes, "This is our 5th year celebrating online (2023 was a special 50 years of PHSNE presentations). Please sign up here for one of ten spots, five to six minutes each; we'd love to see your cameras, im-

ages, and hear your stories about what makes photography meaningful to you.

Please include your name, your topic as a comment, and email address, and choose a spot. Zoom link will be emailed in December. If all spots are taken, contact me at [programs@phsne.org](mailto:programs@phsne.org), and we can arrange to have you share at a meeting in the future. Happy holidays and see you then!

The program will include a brief Annual Meeting at which time the results of the election for Board trustees will be announced.



Chuck Fehl, Rolleflex Gray Baby, 2025 Show and Tell



Image shared by Bill Christen at 2024 Show and Tell



Dan Troxell, camera used for Butterfly Effect Project in Iowa  
2024 Show and Tell

## Two Local Exhibits On Display Now

### Ilse Bing at the Davis Museum

Dubbed Queen of the Leica, Ilse Bing (1899-1998) was a prominent twentieth century photographer and photo-journalist who experimented with abstract forms. *The Worlds of Ilse Bing*, on display at the Davis Museum of Wellesley College, features the work of the German-born artist, organized around the cities where she lived: Frankfurt, Paris, and New York (<https://www1.wellesley.edu/davismuseum/whats-on/upcoming/node/208145>).

The exhibit offers “insight into her influences, process, and undeniable impact on others as they pushed the boundaries of modern art.”



After fleeing Nazi Germany, Bing landed in Paris where she worked with Man Ray, Henri Cartier-Bresson, Gisele Freund, and other prominent artists. More than 20 works by her famous contemporaries (mostly photographs) are included in the exhibit. Read Mark Feeny’s review in the *Boston Globe* which includes biographical details and several samples of Bing’s work (<https://www.bostonglobe.com/2025/10/08/arts/wellesley-college-ilsa-bing-photo-exhibit/>).

The exhibit runs through May 24, 2026.

### PHSNE Membership

**New members are invited to join for half the rates for the first year.** Regular PHSNE membership (U.S. and Canada) is \$30 for students, \$50 for individuals and institutions, and \$55 for a family; foreign membership is \$60. Join or renew online at <https://phsne.org/join> or <https://phsne.org/renew>, or send a check in U.S. dollars, drawn on a U.S. bank or dollar denominated international money order.

Send payments, changes of address, and other contact information, to PHSNE Membership Chair, 47 Calvary St., Waltham MA 02453, email [membership-chair@phsne.org](mailto:membership-chair@phsne.org), or use the Web form at <https://phsne.org/application>.

*Snap shots*, edited by Beverly Regelman, is published monthly, September through June, by the Photographic Historical Society of New England, 47 Calvary St., Waltham MA 02453. Volumes 11-29 are available at <https://snapshots.phsne.org>. The current volume is only available to members.

Articles and exhibition/book reviews are always welcome. Send to [snapshots@phsne.org](mailto:snapshots@phsne.org). Authors retain copyright to their original articles; however upon written application to the *snap shots* editor, PHSNE may grant non-profit societies with similar aims and interests a one-time right to reproduce a *snap shots* article as long as the author and source are credited and a complimentary copy of the publication is sent to PHSNE.

### Tommy Kha at the Addison Gallery

The Addison Gallery at Phillips Academy in Andover is featuring the work of its 2025 Hayes Prize winning photographer Tommy Kha. His family odyssey originated in China; they then migrated to Vietnam and eventually landed in Memphis where Kha was born.



*Dentist Room, Whitehaven, Memphis, 2017, Tommy Kha*

*Other Things Uttered* emerges from the “complex intersection of identities and histories, expanding conventional notions of self-portraiture through his unique visual language. Kha’s photographs often feature masks of his face and cutouts of his torso, eyes, or hands used as stand-ins for his own body. The resulting images possess a playful strangeness, evoking an uncanny sense of displacement and dislocation—a feeling of not quite belonging.”

Kha is the second recipient of the Bartlett H. Hayes Jr. Prize, a biannual award bestowed by the Addison Artist Council (AAC). “The AAC builds on the Addison’s nearly century-long commitment to supporting living artists” (<https://addison.andover.edu/exhibition/hayes-prize-2025-tommy-kha/>).

This is Kha’s first museum solo exhibition. The title derives from *Other Things Seen, Other things Heard*, a 1978 performance by Theresa Hak Kyung Cha, a Korean American artist and writer. “Both artists see themes of translation and mistranslation as central to navigating multiple and fragmented identities.”

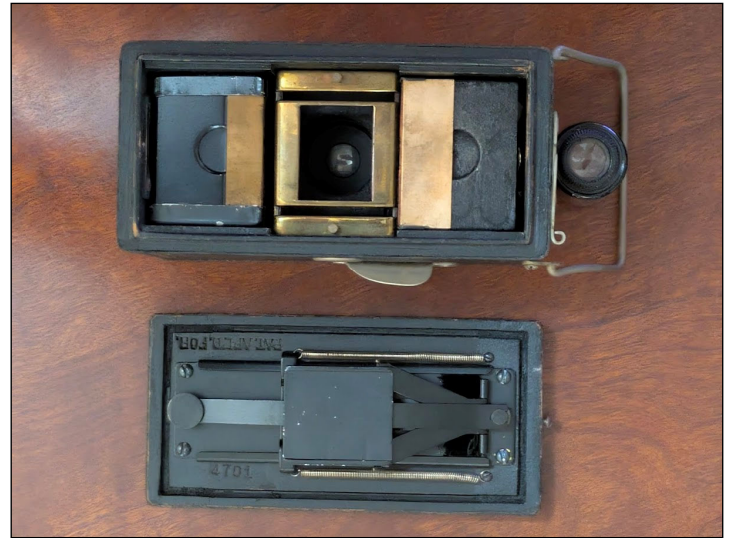
The exhibit is on display through January 26, 2026.

## AnSCO Memo

Introduced in 1927, the AnSCO Memo is reputed to be the first American 35mm still camera. “These cameras shot cine film, 35mm perforated movie stock, that was rolled into dedicated AnSCO metal film cartridges (earlier cartridges were made of wood). This was before Kodak introduced the standardized 135 daylight loading film cartridge in 1934. Film was advanced by a clever spring action claw, similar to a movie camera that shoots one frame at a time. It took 50 shots on a strip of film, in half-frame format (18x24mm)” <https://josephgreco.weebly.com/memo.html>.

leather-covered wood (with shutter release guard) and a Boy Scout version finished in olive and carrying the scout insignia. Lower and higher-end models had different lenses, the lower-end with fixed-focus Ilex Cinemat or Wollensak Velostigmat lenses, the higher-end offered high quality focusing lenses. The large bright viewfinder could be used while wearing eyeglasses.

The Ilex shutter offers speeds of Time, Bulb, 100, 500 and 25. The camera has a tripod socket on the bottom.



The Memo is a compact box-style camera, 2 x 2.5 x 4 inches. Because of its small size, bright viewfinder, and ability to shoot rapidly, the camera was often used by private detectives (however an AI source states “it was clearly intended for casual photography — not industrial or surveillance use”).

Atypically, film advances vertically in the manner of movie cameras, compared to the horizontal feed in most 35 mm cameras.

Various models included the early cameras made of varnished wood with brass fittings, later models of

~Photos by Vladimir Khazan

### Colorful Boost For Analog Photography

The title of an online posting in *The Photographer* reads, “After a decade, Kodak returns with fresh color-negative films,” certainly interesting and welcome news for analog photographers. According to the notice, the company introduced 135 format Kodacolor 100 and 200 in early October (<https://share.google/81WdureUKCinmEdKF>).



The posting also commented on recent reports that Kodak was experiencing significant financial difficulties. In an editor’s note, *The Photographer* stated that they are investigating

claims by Kodak about problems with the article, and the article will be updated.

Kodak is quoted as saying, “The launch is made possible by our recent investments that increased our film manufacturing capacity and, along with the introduction of our KODAK Super 8 Camera and KODAK EKTACHROME 100D Color Reversal Film, reflects Kodak’s ongoing commitment to supporting the long-term health of the film industry.”

### 10 Fun Facts About Polaroid

On May 19, 2025, GBH aired *10 Fun Facts About Polaroid* in its American Experience episode focusing on Edwin Land. GBH members may be able to access the broadcast or it might be available on YouTube. Written highlights are available at <https://www.wgbh.org/foundation/highlights/2025-05-05/american-experience-mr-polaroid10-fun-facts-about-polaroid>.

The fun facts include the derivation of the name Polaroid.



Edwin Land in His Lab, Harvard University, Baker Library

### PHSNE Meetings

Meetings are usually held online on the first Sunday of each month, September to June.

### Upcoming meetings:

- January 4—TBD
- February 1—David Jentz, Kodak Retina

### Connect to PHSNE Online and by email:

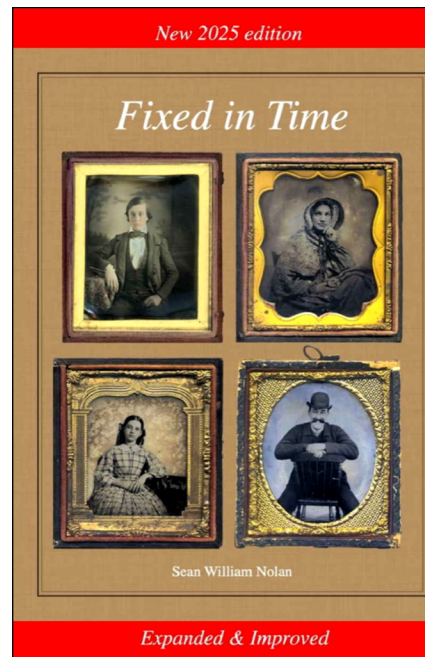
PHSNE’s Web site is online at <https://phsne.org>. See <https://www.facebook.com/PHSNE/> for items of PHSNE interest. Comments are welcome, so join the discussion of photo history. Visit <https://snapshots.phsne.org> for *snap shots* issues Volume 11 (Sept 2005) to Volume 29 (June 2024).

Stay connected to PHSNE via our emails and show announcements. Sign up at <https://phsne.org/emails>.

For information on all available PHSNE publications, see <https://phsne.magcloud.com>.

### Fixed in Time: New Edition

PHSNE members may have used or may own copies of *Fixed in Time* by Sean William Nolan, an important resource for information about dating photographic cased images. The recently released 2025 Revised Edition represents eight years of research since the original version was published.



The edition has a number of important new features. They include:

- Dozens of additional mats, preservers, cases, gilding patterns, and case pads
- Dates revised based on later research
- An entirely new section on cases and British and Continental housings
- Correction of old errors (Author Sean William Nolan has noted that this edition contains “new and improved” errors.)

The book is available in paperback and spiral-bound versions, and as a free pdf, at <https://www.fixedintime.com/get-book>.